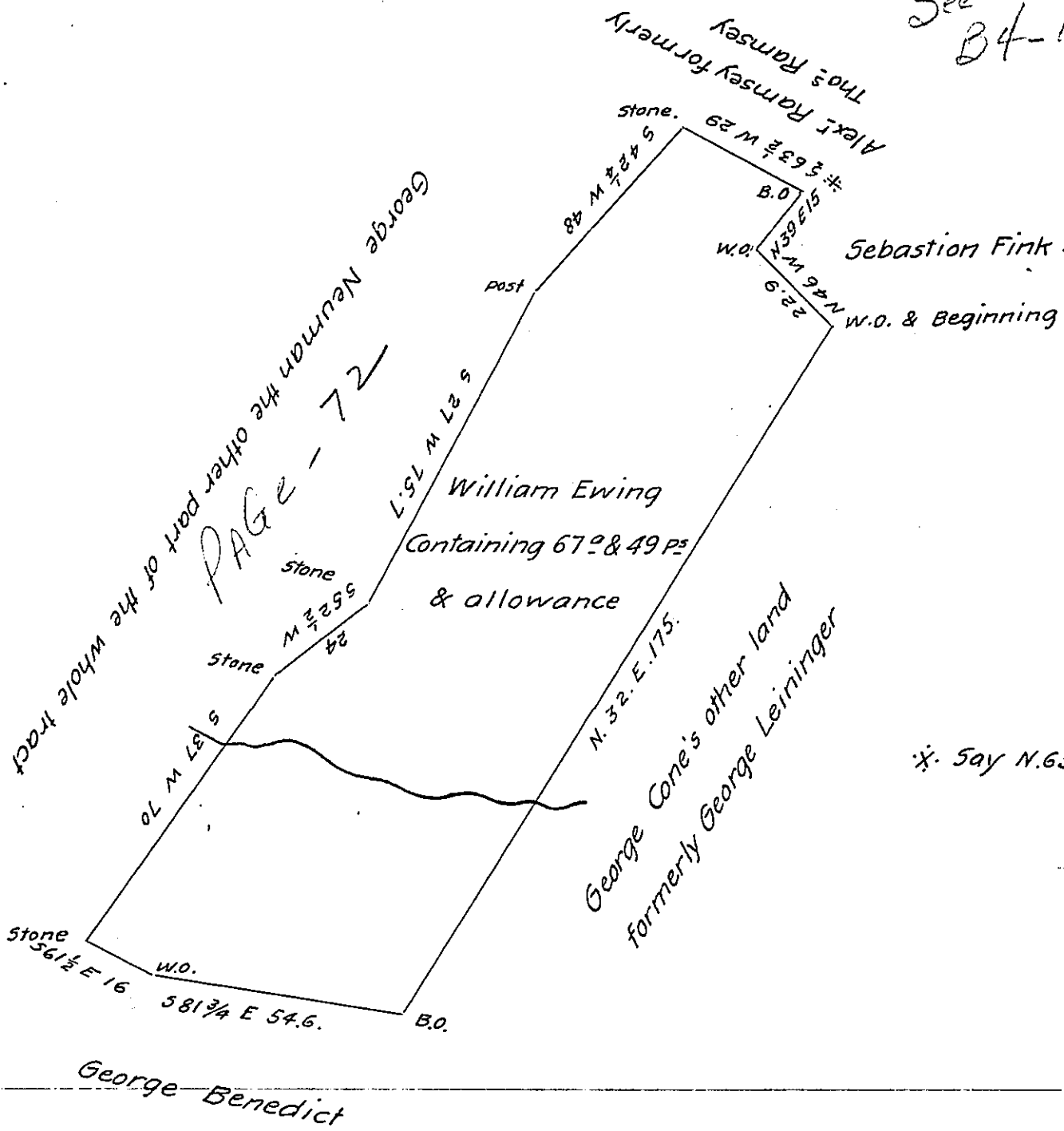


See B4-143



* Say N. 63 1/2 W. 29.
A. Porter. S.G.

Situate in Dover Township in the County of York containing as above set forth 67 acres & 49 P's and allowance. Being part of a larger tract of land which was originally surveyed by George Stevenson late D.S. on the 24th day of April 1758. In pursuance of a warrant granted to William Ewing dated the 8th day of November A.D. 1749 and now on the 17th day of August A.D. 1809. Resurveyed and divided off from the said larger tract of land for George Crome the present owner.

Per.
Jacob Spangler D.S.

To Andrew Porter Esq.
Surveyor General
Lancaster P^a

IN TESTIMONY that the above is a copy of the original remaining on file in the Department of Internal Affairs of Pennsylvania, made conformably to an Act of Assembly approved the 16th day of February, 1833, I have hereunto set my Hand and caused the Seal of said Department to be affixed at Harrisburg, this eighth day of August 1904

Loac P. Penning
Secretary of Internal Affairs.